



Deck-Drive™ DCU COMPOSITE-TO-TIMBER Screw



Collated Screws for the Quik Drive® System

The Deck-Drive™ DCU Composite screw is engineered to provide beautiful fastening results for all types of composite decking while also offering greater ease of installation, a clean finish and superb corrosion resistance.

Deck-Drive DCU Composite decking screws are available in carbon steel with our Quik Guard® coating. For superior corrosion resistance in marine or high-exposure environments, choose the appropriate stainless-steel DCU screw (Type 316). DCU screws provide a clean finish because of their special head design and are available in 4 colours.

Features

- Tri-lobe thread design
- Double-cut point penetrates composite-decking with ease for faster starts
- Cap-head prevents mushrooming and material from rising up above the deck for a smoother, clean looking installation
- Available in 4 colours

Application

- Composite-to-timber decking
- Maximum recommended board thickness 25 mm

Finish

- Quik Guard® coating
- **316 Stainless Steel** (DCU234S316)



This screw is also available loose for hand-drive installation. See page 149 for details.



10 Gauge Composite-to-Timber Screw

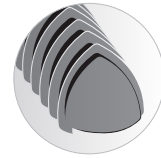
Bit(s) included with every box of screws

Model No.	Colour	Diameter	Length	Thread	Point	Box Qty	Drive Size	Replacement Bit	PRO 250	PRO 300
DCU234SBR01	Brown	4.9mm	70mm	Tri-lobe Threads	Double-Cut	1000	T-20 6-Lobe	BITTX20-RC10	—	✓
DCU234SGR	Grey									
DCU234SRD	Red									
DCU234STN03	Tan									
DCU234S316	—									

These coated fasteners possess a level of corrosion resistance that makes them suitable for use in some exterior and corrosive environments and with some preservative-treated timber. For applications in higher-exposure applications, consider Type-300 series stainless-steel fasteners for superior corrosion resistance. See pages 20–26 for additional important information before selecting a fastener for a specific application.



Cap head prevents mushrooming for a cleaner finish



Tri-lobe thread design reduces cracking or splitting in the composite board during driving, as debris is automatically extracted



Double cut point penetrates even the hardest types of composite decking with ease for faster starts